

# AC Din Rail Meter

PRODUCT MODEL: PZEM-008

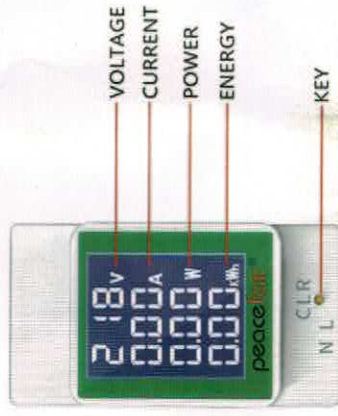
## A. Function

Measure AC voltage, current, active power, energy and display with LCD.

## B. Display

## I. Display interface

BTN wide viewing angle LCD: voltage + current + active power + energy + white backlight(see figure 1)



POWER SUPPLY

( Figure 1 Display Diagram )

## II. Display Instruction

### 1. Voltage

Measurement range: AC50 ~ 300V Starting test voltage: 50V  
Accuracy: ±1%

### 2. Current

Display format:  
Measurement range: 0 ~ 100A  
Starting test current: 0.02A  
Accuracy: ±1%

### 3. Active Power

Measurement range: 0 ~ 30kW  
Display format: < 10W display such as: 9.99W  
< 100W display such as: 99.9W  
< 1000W display such as: 999W  
> 1000W display such as: 9.99kW  
Starting test power: 0.5W  
Accuracy: ±1%

### 4. Energy

Measurement range: 0 ~ 1999kWh  
Display format: < 10kWh display such as: 9.99kWh  
< 100kWh display such as: 99.9kWh  
< 1000kWh display such as: 999kWh  
> 1000kWh display such as: 9.99kWh  
Over the test range will maintain the data, otherwise you reset it.  
Accuracy: ±1%

## C. Other Function

- 1. Backlight control**  
The backlight can be turned on or off by short press the key
- 2. Reset energy**  
Long press the key over 3 seconds until the energy data flash, then release the key, short press the key again to reset the energy, otherwise after 3 seconds it will stop flashing and the energy will not be reset. (See figure 1)
- 3. Data Storage**  
When the power off, the energy data and backlight status can be saved.

## D. Dimension Diagram ( mm )

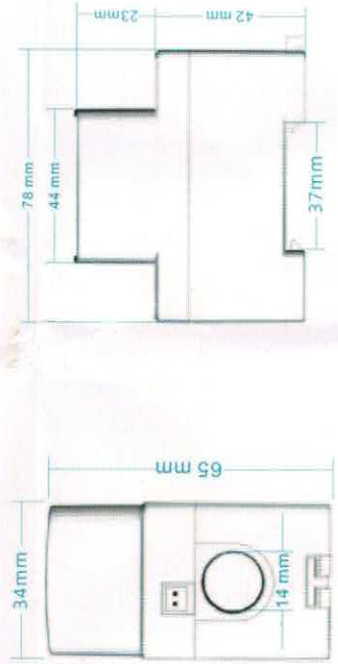


Figure 2 Boundary Dimension

## E. Wiring Diagram

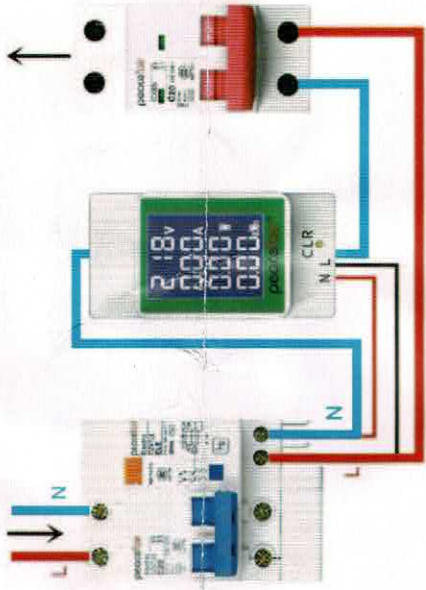


Figure 3 Wiring Diagram(Up in and down out / no need to distinguish N or L)

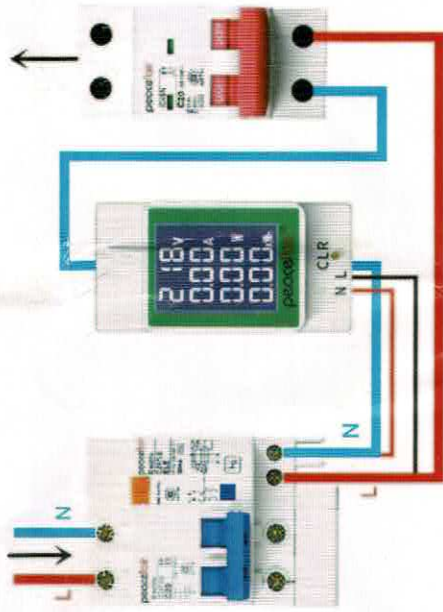


Figure 4 Wiring Diagram(down in and up out / no need to distinguish N or L)

## F. Attention

1. This product is suitable for indoor use.
2. This product is suitable for AC.
3. The measurement voltage and ampere shall not exceed the calibration range.
4. Make sure the wiring is correct.